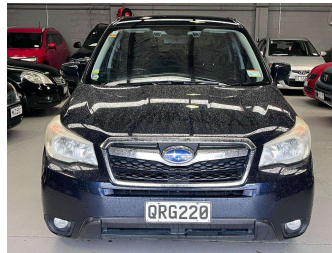


2013 Subaru Forester



Purchase Price **\$9,995**
Includes GST, Registration & Licensing

Finance may be available on this vehicle. Ask one of our friendly staff for more information.



Gain peace of mind with Mechanical Breakdown Insurance. **Ask us how.**



Top features

None Listed

Body Style
Station Wagon

Odometer
145,399 km

Engine
1995 cc

Fuel Type
Petrol


Transmission
Auto

Wheels
-

VIN
-

Interior
-

Safety



Based on 2025 UCSR rating for 12-18 models

Reg No.
QRG220

Ext Colour
Blue

History
-

Seats
-

CO2 Emissions
★★★★☆
173 grams/km


Energy Economy
★★☆☆☆
Annual fuel cost of \$2,900
7.4L per 100km

Cost per year is an estimate based on petrol price of \$2.80 per litre and an average distance of 14000 km. Emissions and Energy Economy figures standardised to 3P WLTP.

Stock ID: 2552703



A2Z Cars | Phone 0800 A2Z CAR | Email sales@a2zcars.co.nz
33 Neilson Street, Onehunga, Auckland 1061, New Zealand
www.a2zcars.co.nz



★★★★★
4.53 | 1086 reviews