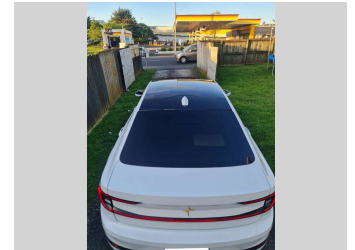
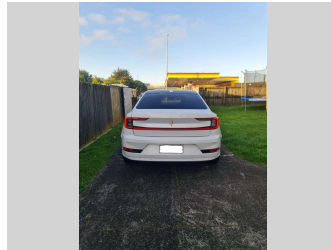
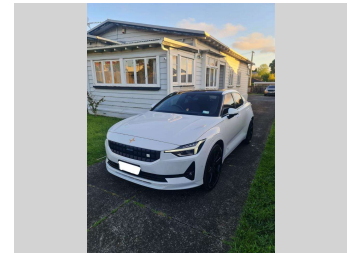
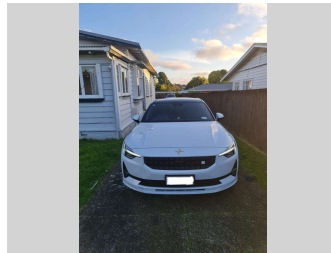
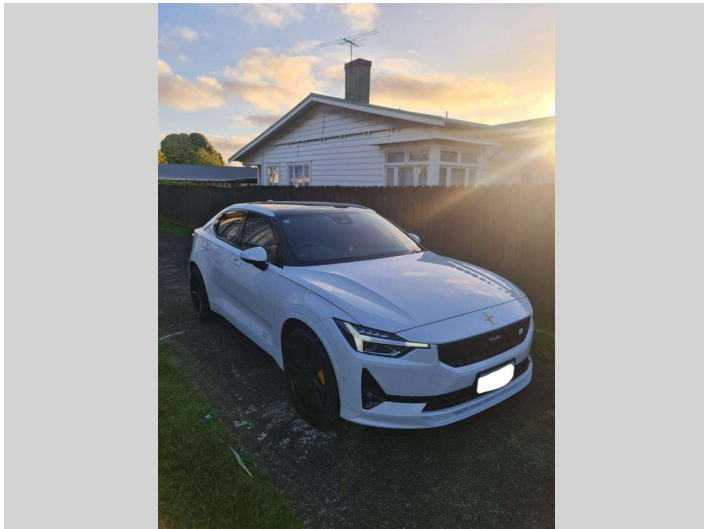



# 2022 Polestar Polestar 2 LDRM PLUS



**Purchase Price** **\$77,700**

Includes GST  
Excludes on-road costs of \$287.5

Finance may be available on this vehicle. Ask one of our friendly staff for more information.



Gain peace of mind with Mechanical Breakdown Insurance. **Ask us how.**



**Top features**

None Listed

Body Style  
**Hatchback**

Odometer  
**30,500 km**

Engine  
**1 cc**


Fuel Type  
**Electricity**

Transmission  
**Auto**

Wheels  
-

VIN  
-

Interior  
-

Safety  
  
Based on 2023 VSRR rating

Reg No.  
**PQJ678**

Ext Colour  
**White**

History  
-

Seats  
-

CO2 Emissions  
**★★★★☆**  
**0 grams/km**


Energy Economy  
**★★★★☆**  
**Annual fuel cost of \$730**

Cost per year is an estimate based on electricity price of \$0.27 per kWh and an average distance of 14000 km. Emissions and Energy Economy figures standardised to 3P WLTP.

**Stock ID: 2551721**



A2Z Cars | Phone 0800 A2Z CAR | Email paulmadan@gmail.com  
33 Neilson Street, Onehunga, Auckland 1061, New Zealand  
www.a2zcars.co.nz



★★★★★  
4.51 | 933 reviews