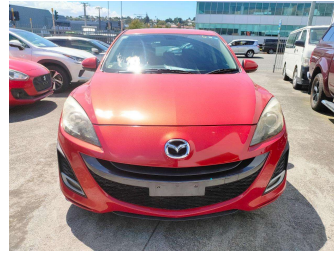


# 2011 Mazda Axela



Purchase Price

**\$10,990**

Includes GST  
Excludes on-road costs of \$569.25

Note: A Clean Car fee or rebate may apply to this vehicle

Finance may be available on this vehicle. Ask one of our friendly staff for more information.



Gain peace of mind with Mechanical Breakdown Insurance. **Ask us how.**



## Top features

None Listed

Body Style

**Hatchback**

Odometer

**83,949 km**

Engine

**1998 cc**

Fuel Type

**Petrol**

Transmission

**Auto**

Wheels

-

VIN

**7AT0C13JX24115866**

Interior

-

Safety



Based on 2023 UCSR rating for 09-13 models

Reg No.

-

Ext Colour

**Red**

History

-

Seats

-

CO2 Emissions

★★★★☆

**183 grams/km**

Energy Economy

★★★☆☆

**Annual fuel cost of \$2,980**

**7.6L per 100km**

Cost per year is an estimate based on petrol price of \$2.80 per litre and an average distance of 14000 km. Emissions and Energy Economy figures standardised to 3P WLTP.

**Stock ID: 2551710**



A2Z Cars | Phone 0800 A2Z CAR | Email paulmadan@gmail.com  
33 Neilson Street, Onehunga, Auckland 1061, New Zealand  
www.a2zcars.co.nz



★★★★★  
4.51 | 927 reviews