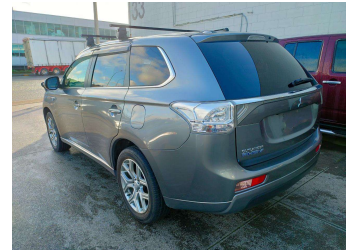
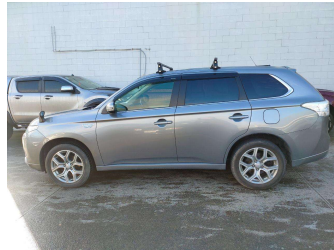
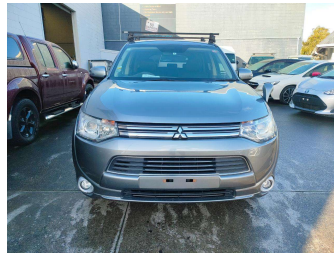


2014 Mitsubishi Outlander PHEV



Purchase Price **\$20,250**

Includes GST
Excludes on-road costs of \$569.25

Finance may be available on this vehicle. Ask one of our friendly staff for more information.



Gain peace of mind with Mechanical Breakdown Insurance. **Ask us how.**



Top features

None Listed

Body Style
RV-SUV

Odometer
114,799 km

Engine
1998 cc, Plug-In Hybrid


Fuel Type
Hybrid

Transmission
Auto

Wheels
-

VIN
7AT0CJ3MX23011376

Interior
-

Safety


Based on 2023 UCSR rating for 12-21 models

Reg No.
-

Ext Colour
silver

History
-

Seats
-

CO2 Emissions
★ ★ ★ ★ ★ ☆
64 grams/km

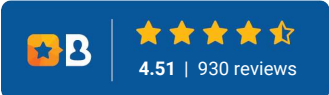
Energy Economy
★ ★ ★ ★ ★ ☆
Annual fuel cost not available
2.7L per 100km

Actual figures and cost per year will vary based on proportion of hybrid mode driving and battery charging schedule.. Emissions and Energy Economy figures standardised to 3P WLTP.

Stock ID: 2551372



A2Z Cars | Phone 0800 A2Z CAR | Email paulmadan@gmail.com
33 Neilson Street, Onehunga, Auckland 1061, New Zealand
www.a2zcars.co.nz



★ ★ ★ ★ ★
4.51 | 930 reviews