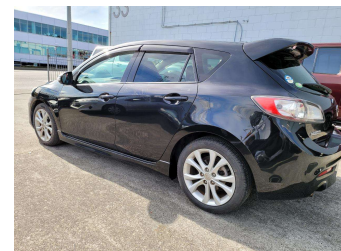
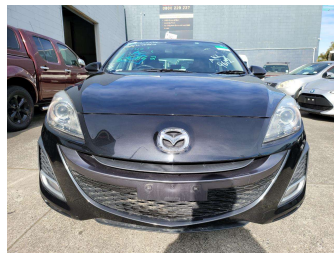



# 2010 Mazda Axela



**Purchase Price** **\$9,495**

Includes GST  
Excludes on-road costs of \$569.25

Finance may be available on this vehicle. Ask one of our friendly staff for more information.



Gain peace of mind with Mechanical Breakdown Insurance. **Ask us how.**



**Top features**

None Listed

Body Style  
**Hatchback**

Odometer  
**111,515 km**

Engine  
**1998 cc**

Fuel Type  
**Petrol**


Transmission  
**Auto**

Wheels  
-

VIN  
**7AT0C13JX23109612**

Interior  
-

Safety



Based on 2023 UCSR rating for 09-13 models

Reg No.  
-

Ext Colour  
**Black**

History  
-

Seats  
-

CO2 Emissions  
**★★★★☆**  
**183 grams/km**


Energy Economy  
**★★★☆☆**  
**Annual fuel cost of \$2,980**  
**7.6L per 100km**

Cost per year is an estimate based on petrol price of \$2.80 per litre and an average distance of 14000 km. Emissions and Energy Economy figures standardised to 3P WLTP.

**Stock ID: 2551366**



A2Z Cars | Phone 0800 A2Z CAR | Email paulmadan@gmail.com  
33 Neilson Street, Onehunga, Auckland 1061, New Zealand  
www.a2zcars.co.nz



★★★★★  
4.51 | 938 reviews