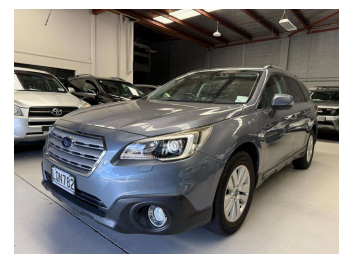
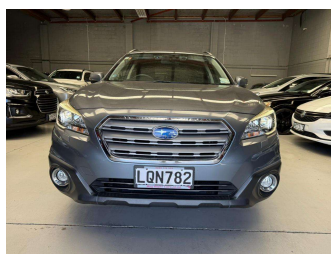
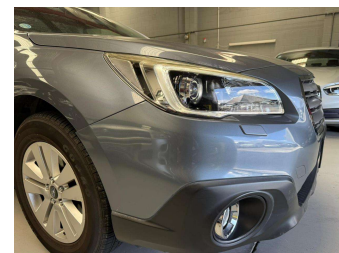


# 2015 Subaru Outback



**Purchase Price** **\$12,749**

Includes GST  
Excludes on-road costs of \$287.5

Finance may be available on this vehicle. Ask one of our friendly staff for more information.



Gain peace of mind with Mechanical Breakdown Insurance. **Ask us how.**



**Top features**

None Listed

Body Style  
**Station Wagon**

Odometer  
**103,699 km**

Engine  
**2490 cc**

Fuel Type  
**Petrol**

Transmission  
**Auto**

Wheels  
-

VIN  
-

Interior  
-

Safety



Based on 2025 VSRR rating

Reg No.  
**LQN782**

Ext Colour  
**Grey**

History  
-

Seats  
-

CO2 Emissions  
**★★★★☆**  
**179 grams/km**


Energy Economy  
**★★☆☆☆**  
**Annual fuel cost of \$2,980**  
**7.6L per 100km**

Cost per year is an estimate based on petrol price of \$2.80 per litre and an average distance of 14000 km. Emissions and Energy Economy figures standardised to 3P WLTP.

**Stock ID: 2552616**



A2Z Cars | Phone 0800 A2Z CAR | Email sales@a2zcars.co.nz  
33 Neilson Street, Onehunga, Auckland 1061, New Zealand  
www.a2zcars.co.nz



★★★★★  
4.53 | 1076 reviews