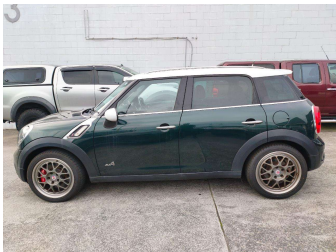
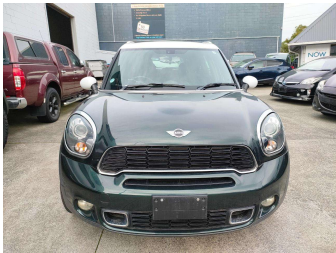


# 2013 Mini Cooper



Purchase Price

\$9,999

Includes GST  
Excludes on-road costs of \$569.25

Finance may be available on this vehicle. Ask one of our friendly staff for more information.



Gain peace of mind with Mechanical Breakdown Insurance. **Ask us how.**



Top features

None Listed

Body Style

Hatchback

Odometer

117,249 km

Engine

1995 cc

Fuel Type

Petrol

Transmission

Auto

Wheels

-

VIN

WMWZC52090WP81944

Interior

-

Safety



Based on 2024 VSRR rating

Reg No.

-

Ext Colour

Green

History

-

Seats

-

CO2 Emissions

★★★★☆☆

209 grams/km

Energy Economy

★☆☆☆☆

Annual fuel cost of \$3,530  
9L per 100km

Cost per year is an estimate based on petrol price of \$2.80 per litre and an average distance of 14000 km. Emissions and Energy Economy figures standardised to 3P WLTP.

Stock ID: 2551407



A2Z Cars | Phone 0800 A2Z CAR | Email paulmadan@gmail.com  
33 Neilson Street, Onehunga, Auckland 1061, New Zealand  
www.a2zcars.co.nz

