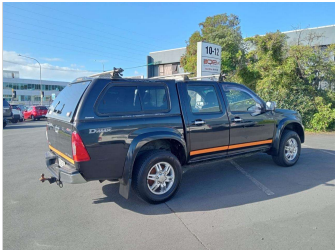
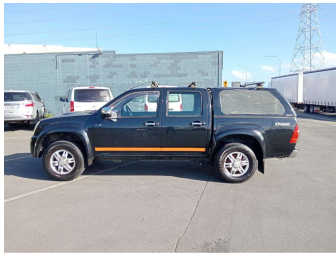


# 2011 Isuzu D-Max



### Purchase Price

**\$11,990**

Includes GST  
Excludes on-road costs of \$287.5

Finance may be available on this vehicle. Ask one of our friendly staff for more information.



Gain peace of mind with Mechanical Breakdown Insurance. **Ask us how.**



### Top features

None Listed

Body Style

**Ute**

Odometer

**339,749 km**

Engine

**2999 cc**

Fuel Type

**Diesel**

Transmission

**Auto**

Wheels

-

VIN

-

Interior

-

Safety



Based on 2024 VSRR rating

Reg No.

**GDH30**

Ext Colour

**Black**

History

-

Seats

-

CO2 Emissions

★☆☆☆☆

**274 grams/km**

Energy Economy

★☆☆☆☆

**Annual fuel cost of \$3,950**

**10.3L per 100km**

Cost per year is an estimate based on diesel price of \$2.00 per litre and an average distance of 14000 km. Includes Road User Charges (RUC). Emissions and Energy Economy figures standardised to 3P WLTP.

**Stock ID: 2552211**



A2Z Cars | Phone 0800 A2Z CAR | Email paulmadan@gmail.com  
33 Neilson Street, Onehunga, Auckland 1061, New Zealand  
www.a2zcars.co.nz

