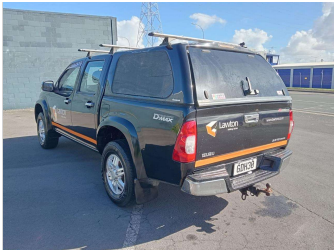
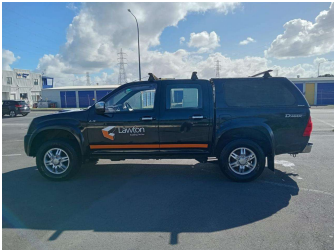
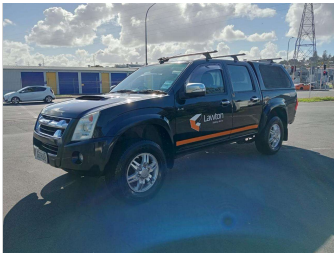
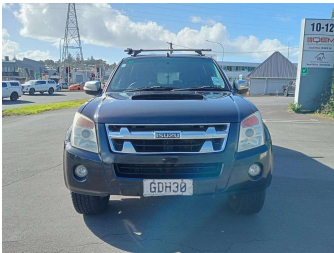


2011 Isuzu D-Max



Purchase Price

\$13,999

Includes GST
Excludes on-road costs of \$287.5

Finance may be available on this vehicle. Ask one of our friendly staff for more information.



Gain peace of mind with Mechanical Breakdown Insurance. **Ask us how.**



Top features

None Listed

Body Style

Ute

Odometer

339,749 km

Engine

2999 cc

Fuel Type

Diesel

Transmission

Auto

Wheels

-

VIN

-

Interior

-

Safety



Based on 2024 VSRR rating

Reg No.

GDH30

Ext Colour

Black

History

-

Seats

-

CO2 Emissions

★☆☆☆☆

274 grams/km

Energy Economy

★☆☆☆☆

Annual fuel cost of \$3,950
10.3L per 100km

Cost per year is an estimate based on diesel price of \$2.00 per litre and an average distance of 14000 km. Includes Road User Charges (RUC). Emissions and Energy Economy figures standardised to 3P WLTP.

Stock ID: 2552211



A2Z Cars | Phone 0800 A2Z CAR | Email paulmadan@gmail.com
33 Neilson Street, Onehunga, Auckland 1061, New Zealand
www.a2zcars.co.nz

