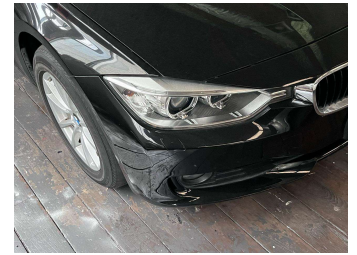



2014 BMW 320i



Purchase Price **\$14,999**

Includes GST
Excludes on-road costs of \$569.25

Finance may be available on this vehicle. Ask one of our friendly staff for more information.



Gain peace of mind with Mechanical Breakdown Insurance. **Ask us how.**



Top features

None Listed

Body Style
Sedan

Odometer
58,799 km

Engine
1997 cc

Fuel Type
Petrol


Transmission
Auto

Wheels
-

VIN
WBA3B16030NP58807

Interior
Black

Safety



Based on 2025 UCSR rating for 12-19 models

Reg No.
-

Ext Colour
Black

History
-

Seats
-

CO2 Emissions
★★★★☆
160 grams/km


Energy Economy
★★★☆☆
Annual fuel cost of \$2,670
6.8L per 100km

Cost per year is an estimate based on petrol price of \$2.80 per litre and an average distance of 14000 km. Emissions and Energy Economy figures standardised to 3P WLTP.

Stock ID: 2552701



A2Z Cars | Phone 0800 A2Z CAR | Email sales@a2zcars.co.nz
33 Neilson Street, Onehunga, Auckland 1061, New Zealand
www.a2zcars.co.nz



★★★★★
4.53 | 1069 reviews