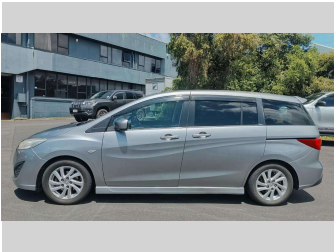
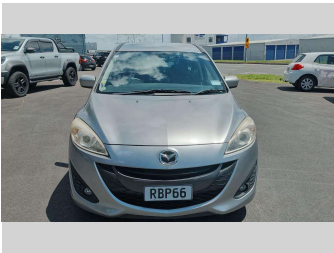


2012 Mazda Premacy



Purchase Price

\$7,999

Includes GST
Excludes on-road costs of \$287.5

Finance may be available on this vehicle. Ask one of our friendly staff for more information.



Gain peace of mind with Mechanical Breakdown Insurance. **Ask us how.**



ASSURANT®

Top features

None Listed

Body Style

Station Wagon

Odometer

73,099 km

Engine

1998 cc

Fuel Type

Petrol

Transmission

Auto

Wheels

-

VIN

-

Interior

-

Safety



Based on 2025 VSRR rating

Reg No.

RBP66

Ext Colour

Silver

History

-

Seats

-

CO2 Emissions

★★★★☆☆

189 grams/km

Energy Economy

★★☆☆☆☆

**Annual fuel cost of \$3,100
7.9L per 100km**

Cost per year is an estimate based on petrol price of \$2.80 per litre and an average distance of 14000 km. Emissions and Energy Economy figures standardised to 3P WLTP.

Stock ID: 2552558



A2Z Cars | Phone 0800 A2Z CAR | Email sales@a2zcars.co.nz
33 Neilson Street, Onehunga, Auckland 1061, New Zealand
www.a2zcars.co.nz

