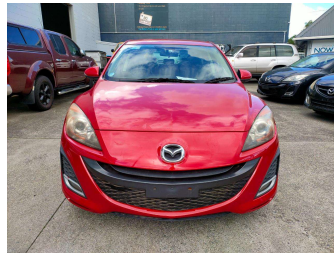


2009 Mazda Axela




Purchase Price **\$8,499**


Includes GST
Excludes on-road costs of \$569.25

Note: A Clean Car fee/rebate does not apply to this vehicle

Finance may be available on this vehicle. Ask one of our friendly staff for more information.



Gain peace of mind with Mechanical Breakdown Insurance. Ask us how.



Top features

None Listed

Body Style
Hatchback

Odometer
121,849 km

Engine
1998 cc

Fuel Type
Petrol


Transmission
Auto

Wheels
-

VIN
7AT0C13JX23106161

Interior
-

Safety



Based on 2023 UCSR rating for 09-13 models

Reg No.
-

Ext Colour
Red

History
-

Seats
-

CO2 Emissions
★★★★☆
183 grams/km


Energy Economy
★★★★☆☆
Annual fuel cost of \$2,980
7.6L per 100km

Cost per year is an estimate based on petrol price of \$2.80 per litre and an average distance of 14000 km. Emissions and Energy Economy figures standardised to 3P WLTP.

Stock ID: 2551242



A2Z Cars | Phone 0800 A2Z CAR | Email paulmadan@gmail.com
33 Neilson Street, Onehunga, Auckland 1061, New Zealand
www.a2zcars.co.nz



★★★★★
4.51 | 928 reviews