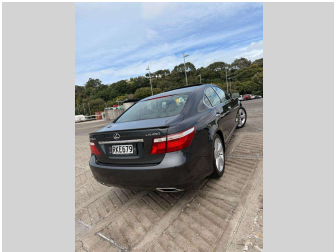
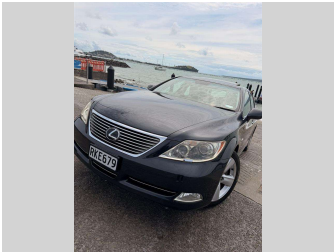
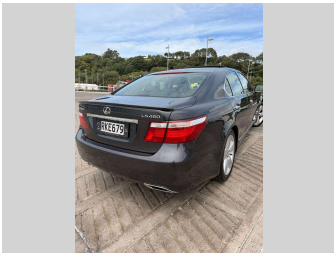
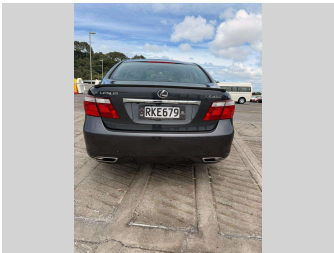


2009 Lexus LS 460



Purchase Price

\$14,888

Includes GST
Excludes on-road costs of \$287.5

Finance may be available on this vehicle. Ask one of our friendly staff for more information.



Gain peace of mind with Mechanical Breakdown Insurance. **Ask us how.**



Top features

None Listed

Body Style

Sedan

Odometer

209,299 km

Engine

4608 cc

Fuel Type

Petrol

Transmission

Auto

Wheels

-

VIN

-

Interior

-

Safety



Based on 2025 VSRR rating

Reg No.

RKE679

Ext Colour

Grey

History

-

Seats

-

CO2 Emissions

☆☆☆☆☆☆

297 grams/km

Energy Economy

☆☆☆☆☆☆

Annual fuel cost of \$4,860

12.4L per 100km

Cost per year is an estimate based on petrol price of \$2.80 per litre and an average distance of 14000 km. Emissions and Energy Economy figures standardised to 3P WLTP.

Stock ID: 2552635



A2Z Cars | Phone 0800 A2Z CAR | Email sales@a2zcars.co.nz
33 Neilson Street, Onehunga, Auckland 1061, New Zealand
www.a2zcars.co.nz

